



— THE TOWNHOMES AT —
JOLLIFF
LANDING





INTERIOR

- Finished single car garage
- Nine foot Ceilings on BOTH Levels
- Pan ceiling with crown molding in master bedroom
- Upgraded Trim including cased windows and doorways
- Pre-wired for phone and cable
- Pre-wired for ceiling fan in all bedrooms & family room
- Overhead lights in Bedrooms 2 and 3
- Lighted walk-in closets with built-in shelving
- Separate Laundry Room and linen closet (per plan)
- Designer selected two toned paint scheme
- Upgraded stain-resistant carpeting
- Resilient vinyl flooring in bathrooms
- Provincial two-panel interior doors
- Custom stairway and railings
- Luxury vinyl tile in foyer, kitchen & powder room

SECURITY & ENERGY SAVING AMENITIES

- Dead bolt locks on exterior doors
- Pre-wired for automatic garage door opener
- Smoke detectors
- Copper wiring throughout
- Energy-efficient electric water heater and electric heat
- 14 seer single zone air conditioning with optional upgrade
- Single-hung insulated vinyl windows with screens
- Fiberglass insulated entry door
- Water saving faucets
- R-38 insulated ceiling, where applicable
- R-15 insulated exterior walls
- Manufacturers warranties, where applicable

EXTERIOR

- Custom upgraded HardiePlank exteriors with coordinated accents
- Private Fenced Yard
- Front Porch
- Driveway Parking
- Finest quality architectural 30-year roof shingles
- Garage door of insulated, raised panel steel
- Professionally-landscaped and sodded yards
- Oversized windows on first floor
- Hose bibs on front and rear
- Weatherproof electrical receptacles on front and rear
- Downspouts and Gutters

KITCHEN & BATH

- Custom-crafted, 42" Maple Cabinets & Pantry
- Recessed Can Lights in Kitchen
- 8" Deep stainless steel sink with garbage disposal
- Single-lever Delta® faucet with spray attachment
- Granite Kitchen and Bar Countertops available in a variety of Designer Colors
- Under Cabinet Lighting on Kitchen Cabinets
- Frigidaire smooth-top self-cleaning range
- Built-in Frigidaire microwave with exterior venting
- Frigidaire five-cycle dishwasher
- Ice – maker supply line
- Cultured Marble vanity tops in Bathrooms
- Easy – care fiberglass tubs and showers
- Separate Luxurious Oversized Soaking Tub and Separate shower in Master Bathroom
- Oversized mirrors in master bath
- Upgraded Delta® fixtures in master bath & kitchen
- Elongated Water Saving Toilets in all Bathrooms

BUILT BY:

CORINTH
RESIDENTIAL

5117 Lombard Street Chesapeake, Va 23321 | JolliffLanding.com | 757-639-2764
KathyN@corinthresidential.com | Sales By Corinth Realty | www.CorinthRealty.com

Builder reserves the right to make changes to specifications, prices, incentives, materials, colors, equipment and models without notice and some restrictions may apply. All photographs and illustrations are concepts and accuracy is not guaranteed. Room and house dimensions approximate. Please consult sales consultant for more details. Effective /2018.





Standard Amenities

The Townhomes at Jolliff Landing | Other Communities

Ideal Western Branch and Schools Location	Included		?
Generous Builder Supplied Closing Cost Assistance	Included		?
Granite Countertops in Kitchen	Included		?
Local Builder with 50+ Years Experience	Included		?
Private Fenced Patio	Included		?
Garage and Driveway Parking	Included		?
Great Location Near Major Roadways and Retail	Included		?
Designer 42" Lane Raised Panel Cabinets in Kitchen	Included		?
9 Foot Ceilings on BOTH Floors	Included		?
Upgraded Delta Plumbing Fixtures and Progress Light	Included		?
Spacious Walk-In Master Bedroom Closets	Included		?
Gracious OPEN Floor Plans	Included		?
Upgraded Kenmore Smooth Top Range	Included		?
Separate Shower and Tub in Master Bathroom	Included		?
Upgraded Trim Including Cased Windows & Doorways	Included		?
Pan Ceiling in Master Bedroom with lighting	Included		?

BUILT BY:

CORINTH
RESIDENTIAL

5117 Lombard Street Chesapeake, Va 23321 | JolliffLanding.com | 757-639-2764
KathyN@corinthresidential.com | Sales By Corinth Realty | www.CorinthRealty.com

Builder reserves the right to make changes to specifications, prices, incentives, materials, colors, equipment and models without notice and some restrictions may apply. All photographs and illustrations are concepts and accuracy is not guaranteed. Room and house dimensions approximate. Please consult sales consultant for more details. Effective /2018.





— THE TOWNHOMES AT —
JOLLIFF
 LANDING

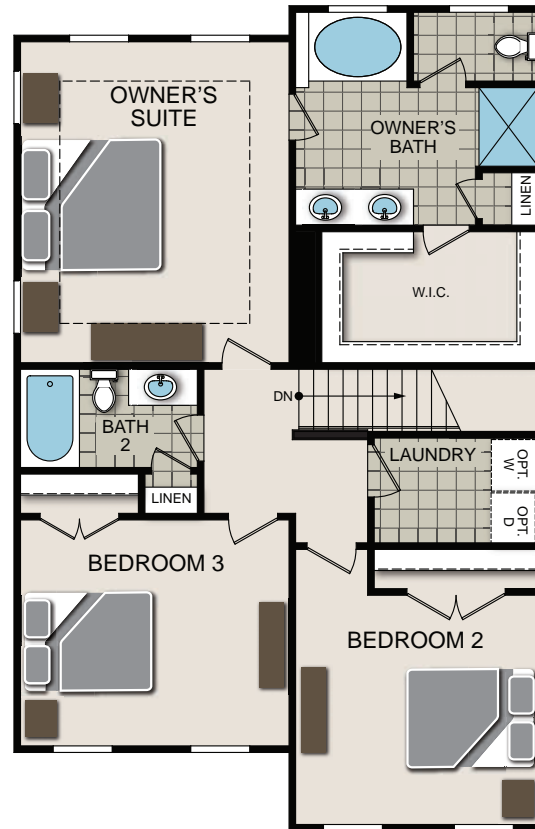
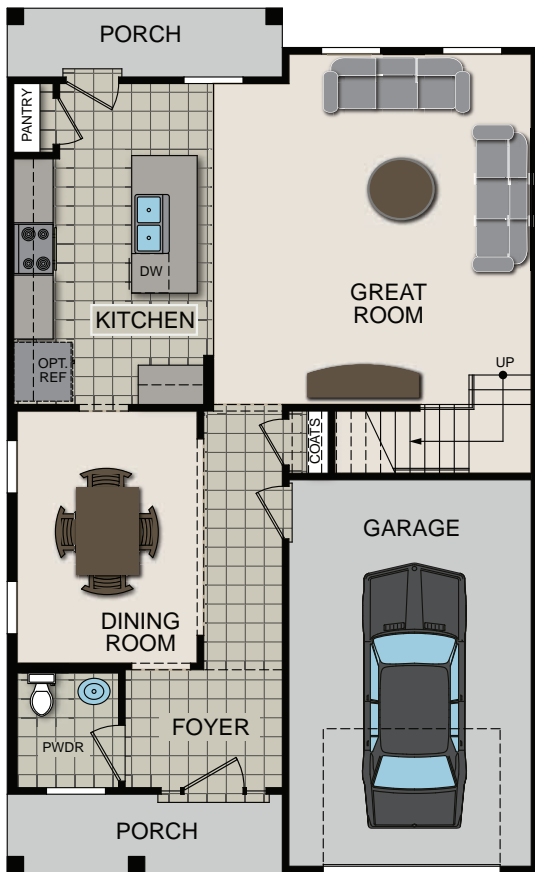
Jordan Floor Plan



Jordan - 1870 Square Feet

Address: _____

\$ _____



BUILT BY:

CORINTH
 RESIDENTIAL

5117 Lombard Street Chesapeake, Va 23321 | JolliffLanding.com | 757-639-2764
 KathyN@corinthresidential.com | Sales By Corinth Realty | www.CorinthRealty.com

Builder reserves the right to make changes to specifications, prices, incentives, materials, colors, equipment and models without notice and some restrictions may apply. All photographs and illustrations are concepts and accuracy is not guaranteed. Room and house dimensions approximate. Please consult sales consultant for more details. Effective /2018.



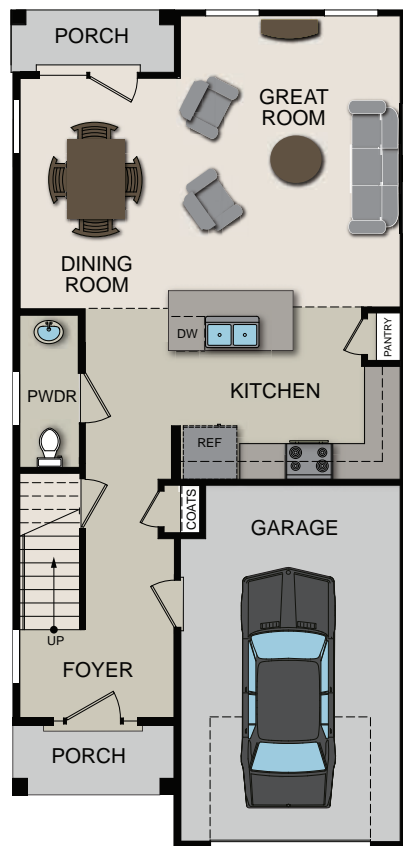


Ashbury Floor Plan



Ashbury - 1950 Square Feet Address: _____

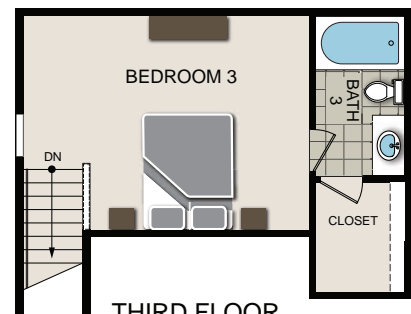
\$ _____



FIRST FLOOR



SECOND FLOOR



THIRD FLOOR

BUILT BY:

CORINTH
RESIDENTIAL

5117 Lombard Street Chesapeake, Va 23321 | JolliffLanding.com | 757-639-2764
KathyN@corinthresidential.com | Sales By Corinth Realty | www.CorinthRealty.com

Builder reserves the right to make changes to specifications, prices, incentives, materials, colors, equipment and models without notice and some restrictions may apply. All photographs and illustrations are concepts and accuracy is not guaranteed. Room and house dimensions approximate. Please consult sales consultant for more details. Effective /2018.

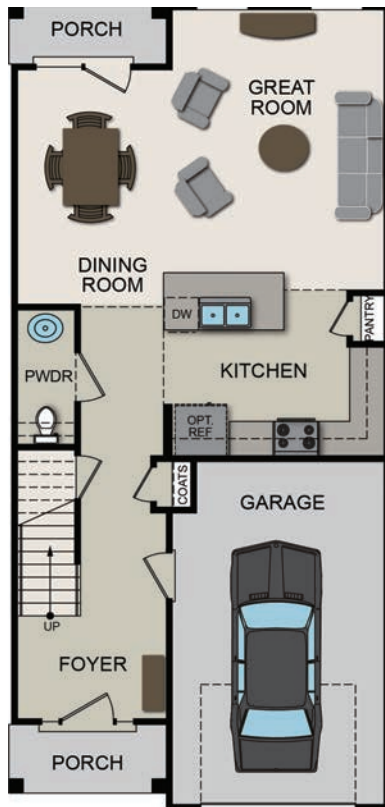




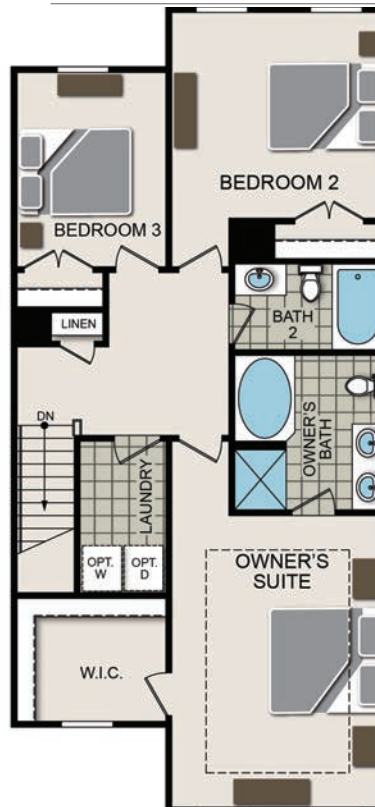
Laurel - 1650 Square Feet

Address: _____

\$ _____



FIRST FLOOR



SECOND FLOOR

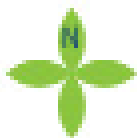
BUILT BY:

CORINTH
RESIDENTIAL

5117 Lombard Street Chesapeake, Va 23321 | JolliffLanding.com | 757-639-2764
KathyN@corinthresidential.com | Sales By Corinth Realty | www.CorinthRealty.com

Builder reserves the right to make changes to specifications, prices, incentives, materials, colors, equipment and models without notice and some restrictions may apply. All photographs and illustrations are concepts and accuracy is not guaranteed. Room and house dimensions approximate. Please consult sales consultant for more details. Effective /2018.





- ASHBURY
- JORDAN
- LAUREL

PROPOSED BOUNDARY

BUILT BY:

CORINTH
RESIDENTIAL

5117 Lombard Street Chesapeake, Va 23321 | JolliffLanding.com | 757-639-2764
KathyN@corinthresidential.com | Sales By Corinth Realty | www.CorinthRealty.com

Builder reserves the right to make changes to specifications, prices, incentives, materials, colors, equipment and models without notice and some restrictions may apply. All photographs and illustrations are concepts and accuracy is not guaranteed. Room and house dimensions approximate. Please consult sales consultant for more details. Effective /2018.





Shopping & Food

1. OneLife Fitness
2. Lowes
3. Harris Teeter
4. Kroger Market Place
5. Farm Fresh
6. College Drive Shops & Restaurants
7. Harbor View
8. Cracker Barrel

9. Chesapeake Square
Including: Target, Food Lion, Best Buy, Red Robin, Outback Steakhouse, JC Pennys, Toys R Us, Old Navy, Plaza Azteca, Surf Rider, Various Fast Food Centers, Services including Banks, Beauty, Auto Care, Pet Care, and more...



Recreation & Activities

1. Riverfront Golf Club
2. Sleepy Hole
3. Bennets Creek Park
4. Cinemark Theater
5. Western Branch Community Center
6. Portsmouth City Park
7. Marlin Club

BUILT BY:

CORINTH
RESIDENTIAL

5117 Lombard Street Chesapeake, Va 23321 | JolliffLanding.com | 757-639-2764
KathyN@corinthresidential.com | Sales By Corinth Realty | www.CorinthRealty.com

Builder reserves the right to make changes to specifications, prices, incentives, materials, colors, equipment and models without notice and some restrictions may apply. All photographs and illustrations are concepts and accuracy is not guaranteed. Room and house dimensions approximate. Please consult sales consultant for more details. Effective /2018.

