

**COURTHOUSE**



**G R E E N**

*Built by:*



*For info call:*

**Kathy Nelms**  
**(757) 639-2764**

[www.courthousegreenvb.com](http://www.courthousegreenvb.com)

*Marketed by:*



LICENSED IN VIRGINIA



# COURTHOUSE GREEN

## *Builder Story*

*Alex and O. Pete Kotarides, members in **Corinth Residential**, have been building quality homes and developing neighborhoods in Virginia and North Carolina since 1963. Through the years Alex and Pete, have built a reputation for providing superior homes. Alex and Pete and their sons have formed Corinth Residential to continue that tradition.*

*With the involvement of Alex and Pete and the second Kotarides generation, Corinth Residential is focused on developing a reputation for quality, value, and craftsmanship along with customer satisfaction in the projects which it manages. The many fine homes and award winning neighborhoods with which Alex and Pete have been involved throughout Hampton Roads and beyond is testimony to this ongoing commitment.*



# COURTHOUSE GREEN

## Standard Features

### Interior Features

- Nine foot ceilings on BOTH Levels
- Tray ceiling with crown molding and lighting in master bedroom
- Wall-to-wall stain-resistant carpeting
- No-wax vinyl flooring in kitchen and bathrooms
- Provincial two-panel interior doors
- Custom stairway and railings
- Pre-wired for ceiling fan in family room
- Pre-wired for phone in kitchen and master bedroom
- Pre-wired for cable in all bedrooms and family room
- Lighted walk-in closets with built-in shelving
- Separate utility room and linen closet (per plan)
- Finished two car garage
- Upgraded Trim including cased windows and doorways
- Designer selected two toned paint scheme
- Fireplace with Slate Surround and Painted Mantle

### Kitchen & Bath Features

- Custom-crafted, 42" Armstrong raised panel birch cabinets
- Pantry
- Recessed can lights in Kitchen
- 8" deep double stainless steel sink with garbage disposal single-lever Delta® faucet with spray attachment
- Laminate kitchen & bar countertops available in a variety of designer colors with optional granite upgrade
- Kenmore smooth, top self-cleaning range
- Built-in Kenmore microwave with exterior venting
- Kenmore five-cycle dishwasher
- Ice-maker supply line
- Cultured marble vanity tops
- Double - bowl vanities with single-lever Delta faucets in master bedroom
- Easy-care fiberglass tubs and showers (per plan) in secondary bathrooms
- Oversized mirrors in master bath
- Upgraded Delta fixtures in master bath & kitchen
- Separate oversized jettet tub and separate ceramic shower in master bathroom
- Elongated toilets in all bathrooms
- Separate commode area in master bathroom
- Ceramic tile floors, shower walls, and tub surround in Master Bathroom

### Exterior Features

- Custom brick and vinyl siding exteriors
- Finest quality architectural 30-year roof shingles
- Garage door of insulated, raised panel steel
- Professionally-landscaped and sodded front yards
- Oversized windows on first floor
- Hose bibs on front and rear
- Weatherproof electrical receptacles on front and rear
- Downspouts and gutters (per plan)
- Fenced rear yard with gate

### Energy Saving Features

- Dead bolt locks on exterior doors (per plan)
- Pre-wired for automatic garage door opener
- CATV communication cable for telephone, TV, and internet
- Smoke detectors
- Copper wiring throughout
- Energy-efficient gas water heater and gas heat
- Central air conditioning
- Single-hung insulated vinyl windows with screens
- Fiberglass insulated entry door
- Water saving commodes and faucets
- R-38 insulated ceiling, where applicable
- R-13 insulated exterior walls
- Manufacturers warranties, where applicable
- Insulated garage doors

### Additional Features

- All homes face open space
- Sought after kellam school district
- Minutes to the BEST beaches and amenities
- Mature trees preserved and incorporated in landscape plan
- Common area maintenance
- Insurance policy for condominium
- Replacement reserves for long term repairs and replacements of common elements
- Professional condominium management



Updated 9-30-14

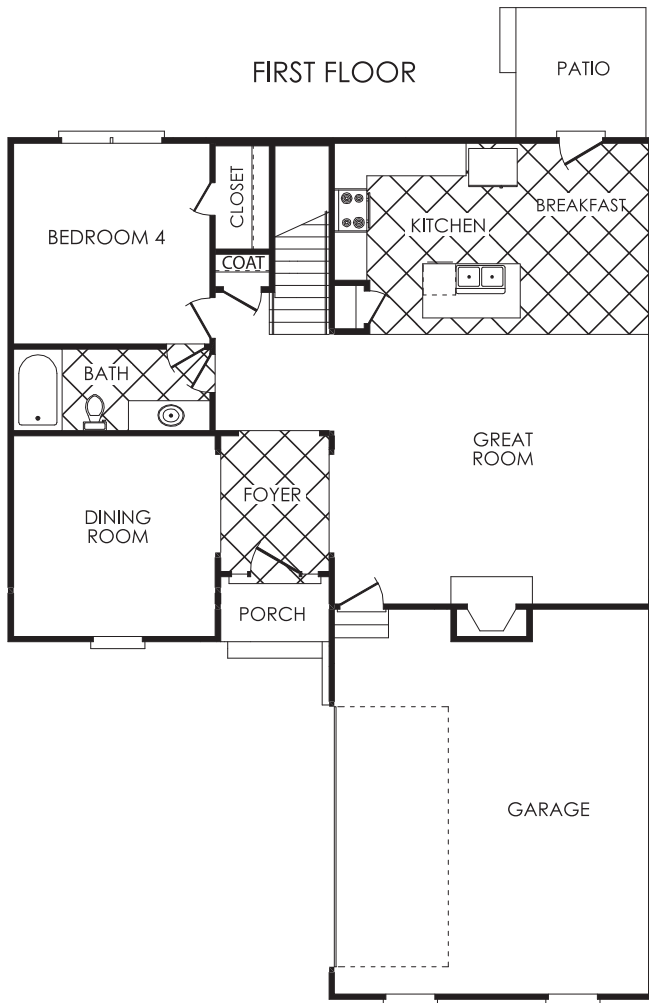
*Above deemed to be accurate but not warranted. Minor room size variations and reversed floorplans are subject of field conditions. Prices and specifications are based on the latest possible information available at time of publication approval. Builder reserves the right to make changes at any time without notice in specifications, prices, material, colors, equipment, and models.*



# COURTHOUSE GREEN

## Avery

### SECOND FLOOR



Updated 9-30-14

Above deemed to be accurate but not warranted. Minor room size variations and reversed floorplans are subject of field conditions. Prices and specifications are based on the latest possible information available at time of publication approval. Builder reserves the right to make changes at any time without notice in specifications, prices, material, colors, equipment, and models.



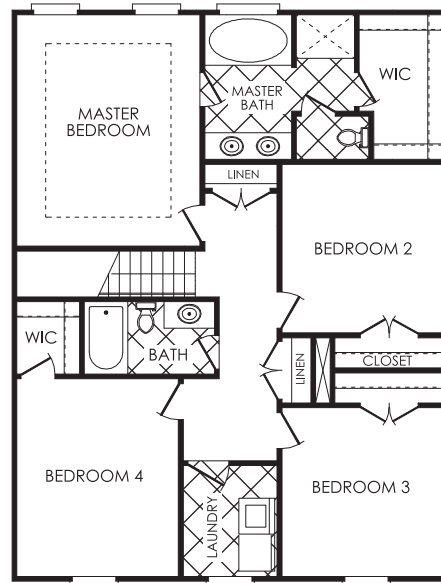
A Howard Hanna Company

Real Estate Mortgage Title Insurance

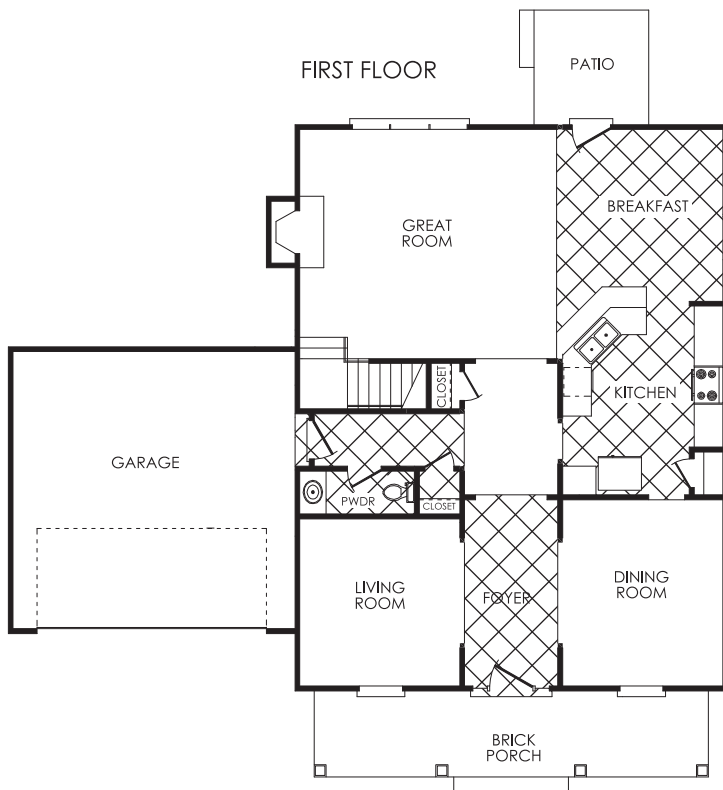
# COURTHOUSE GREEN

## Brennan

### SECOND FLOOR



### FIRST FLOOR



Updated 9-30-14

Above deemed to be accurate but not warranted. Minor room size variations and reversed floorplans are subject of field conditions. Prices and specifications are based on the latest possible information available at time of publication approval. Builder reserves the right to make changes at any time without notice in specifications, prices, material, colors, equipment, and models.



New Homes Division



A Howard Hanna Company

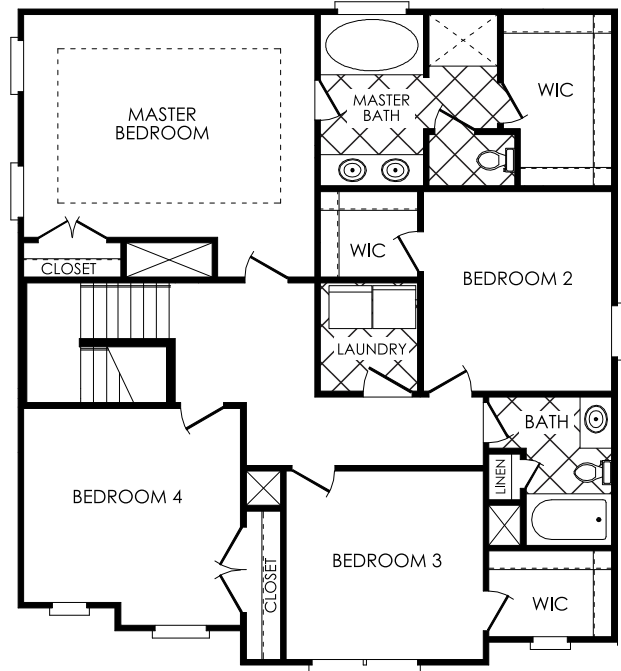


Real Estate Mortgage Title Insurance

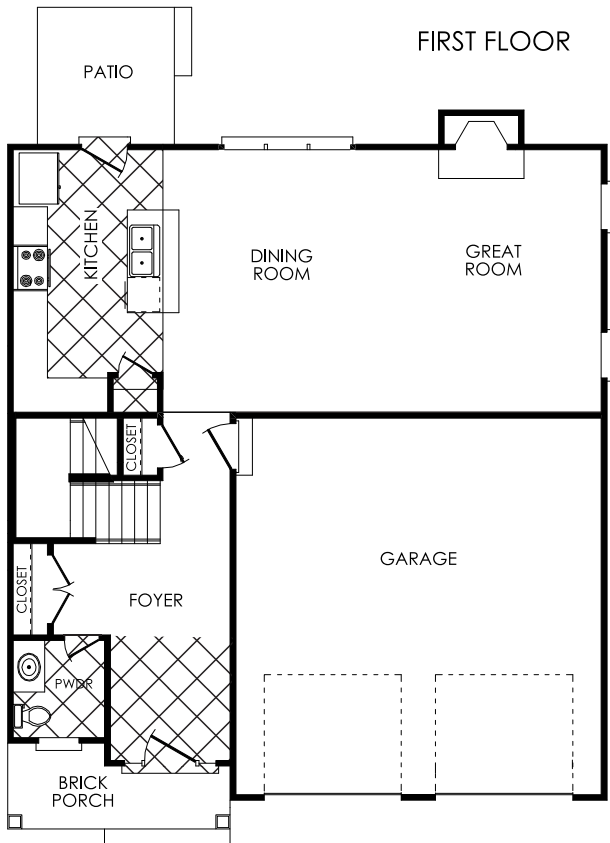
# COURTHOUSE GREEN

## Caldwell

### SECOND FLOOR



### FIRST FLOOR



Updated 9-30-14

Above deemed to be accurate but not warranted. Minor room size variations and reversed floorplans are subject of field conditions. Prices and specifications are based on the latest possible information available at time of publication approval. Builder reserves the right to make changes at any time without notice in specifications, prices, material, colors, equipment, and models.

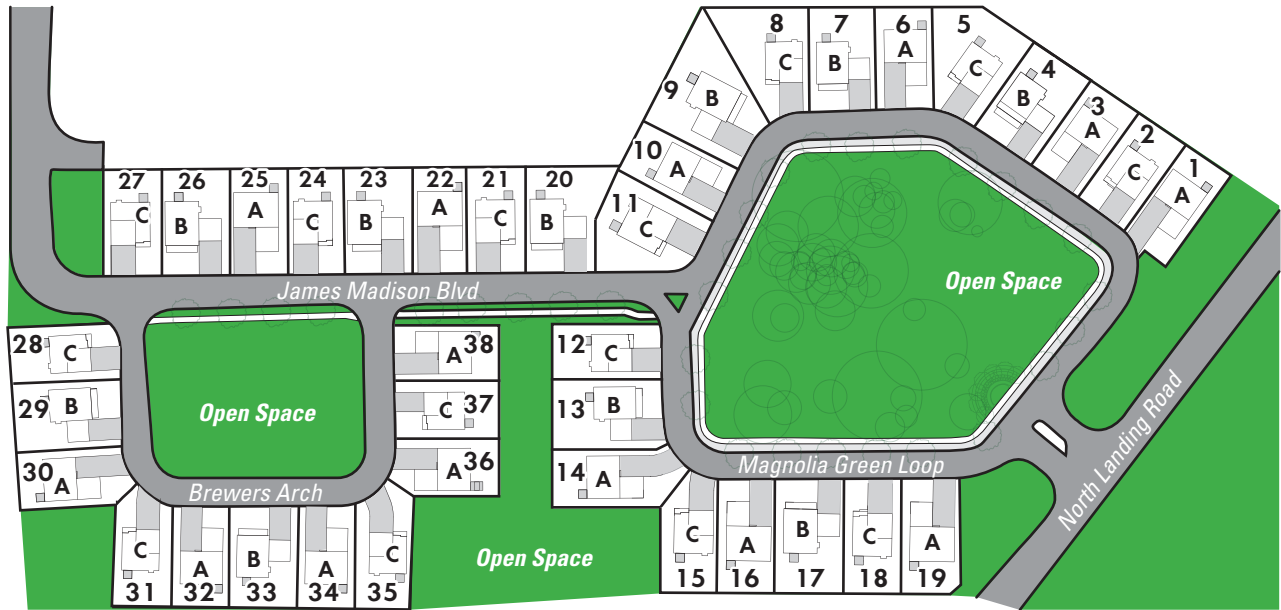


A Howard Hanna Company

Real Estate Mortgage Title Insurance

# COURTHOUSE GREEN

## Site Plan



**A: Avery B: Brennan C: Caldwell**



Updated 9-30-14

Above deemed to be accurate but not warranted. Minor room size variations and reversed floorplans are subject of field conditions. Prices and specifications are based on the latest possible information available at time of publication approval. Builder reserves the right to make changes at any time without notice in specifications, prices, material, colors, equipment, and models.

